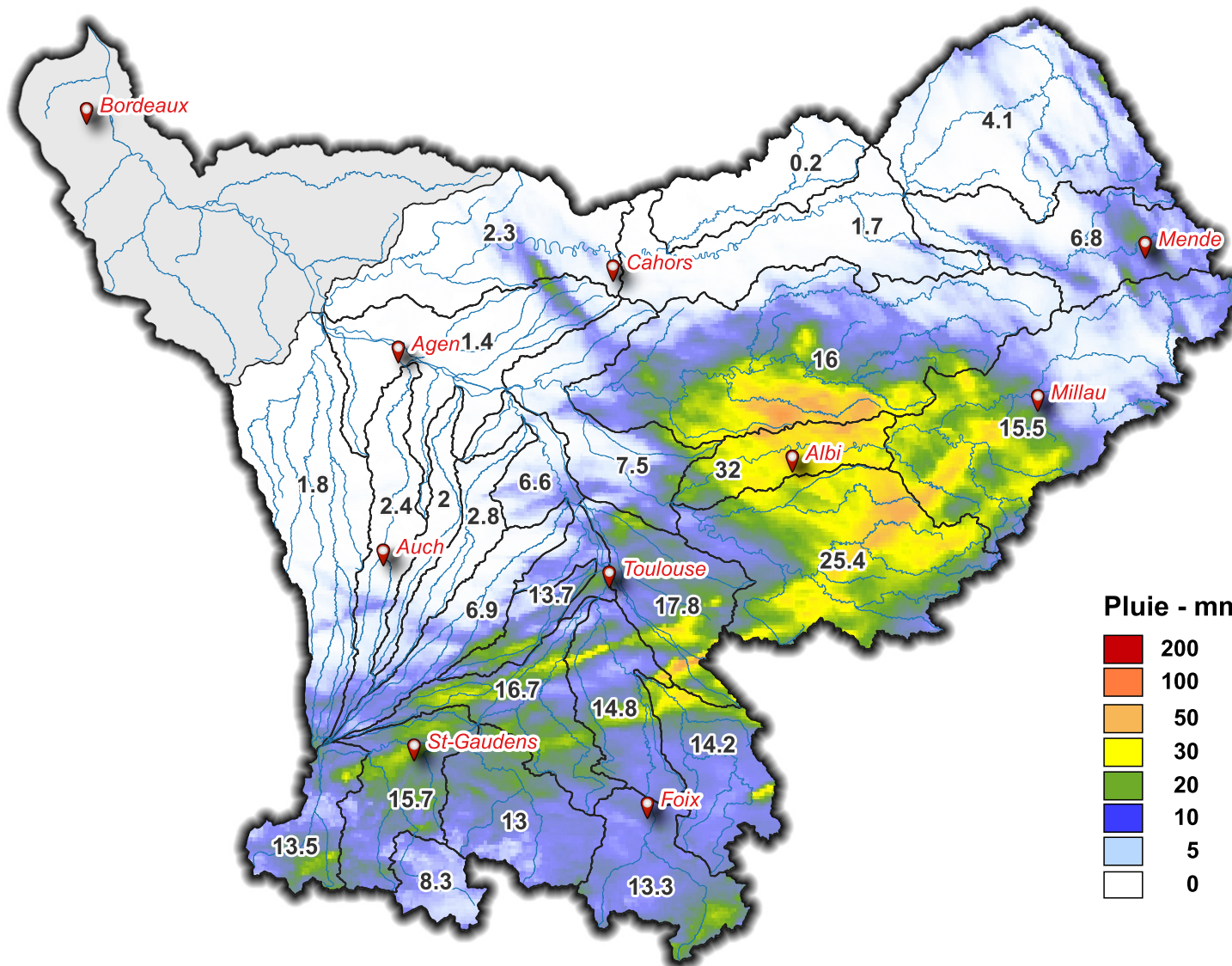
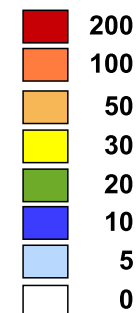


Lame d'eau du 29/06/2023 à 08 h au 30/06/2023 à 08 h



**Pluie - mm**



**SOUS - BASSINS**

**Lame d'eau  
moyenne  
(mm/j)**

|                     |      |
|---------------------|------|
| Touch               | 13.7 |
| Save                | 6.9  |
| Hers Mort           | 17.8 |
| Hers Vif            | 14.2 |
| Ariège Lèze         | 14.8 |
| Ariège amont        | 13.3 |
| Louge Arize         | 16.7 |
| Salat               | 13   |
| Garonne amont       | 15.7 |
| Val d'Aran          | 8.3  |
| Neste               | 13.5 |
| Garonne toulousaine | 6.6  |
| Arrats              | 2    |
| Gimone              | 2.8  |
| Baïse               | 1.8  |
| Gers                | 2.4  |
| Garonne agenaise    | 1.4  |
| Aveyron             | 16   |
| Tarn aval           | 7.5  |
| Agout               | 25.4 |
| Tarn moyen          | 32   |
| Tarn amont          | 15.5 |
| Lot aval            | 2.3  |
| Lot amont           | 6.8  |
| Lot médian          | 1.7  |
| Célé                | 0.2  |
| Truyere             | 4.1  |
| <b>Garonne aval</b> |      |