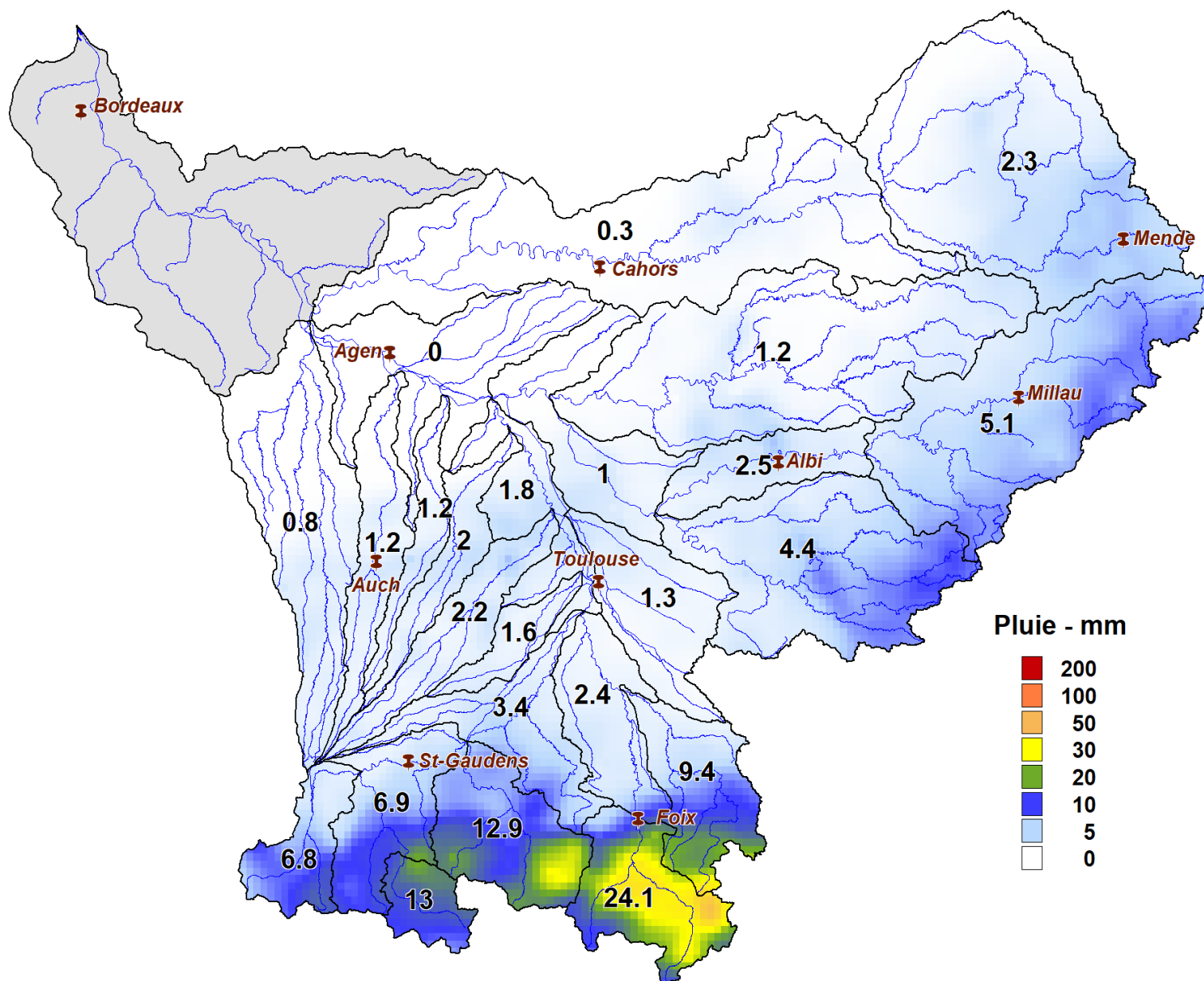
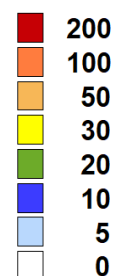


Lame d'eau du 10/09/2019 à 8 h au 11/09/2019 à 8 h



Pluie - mm



| SOUS-BASSINS | Lame d'eau moyenne (mm/j) |
|--|---------------------------|
| Val d'Aran | 13.0 |
| Garonne amont | 6.9 |
| Neste | 6.8 |
| Salat | 12.9 |
| Louge - Arize | 3.4 |
| Ariège amont | 24.1 |
| Ariège - Lèze | 2.4 |
| Hers Vif | 9.4 |
| Hers Mort | 1.3 |
| Garonne toulousaine | 1.8 |
| Touch | 1.6 |
| Save | 2.2 |
| Gimone | 2.0 |
| Tarn amont | 5.1 |
| Tarn moyen | 2.5 |
| Agout | 4.4 |
| Tarn aval | 1.0 |
| Aveyron | 1.2 |
| Garonne agenaïse | 0.0 |
| Arrats | 1.2 |
| Gers | 1.2 |
| Baïse | 0.8 |
| Lot amont - Truyère | 2.3 |
| Lot aval | 0.3 |
| Garonne aval | |
| Volume total précipité (hm³) | 175.6 |